

- KEY**
- The Scheme (illustrative)
  - 500m Study Area
  - Order Limits
  - Conservation Area
  - Listed Building**
  - Grade**
  - ▲ II
  - ▲ II\*
  - + Locally Listed Buildings
  - ▲ Local Interest Buildings

78: Frieght Yard Building  
 76: Warehouse, 41 Commercial Road  
 77: Goods Office, Freight Yard  
 60: Port House  
 70: Central Railway Station  
 72: 18-32 Station Square  
 75: Terraced Houses (19th Century)  
 71: 7-11 Station Square  
 74: RNLI Statue  
 73: 1-8 Pier Terrace  
 61: Royal Norfolk and Suffolk Yacht Club  
 80: 50-56 Waveney Drive  
 79: 42 Waveney Drive

South Lowestoft CA  
 67: 9, 10 and 11 Waterloo Road and 16-28 Victoria Terrace  
 65: Wellington Esplanade  
 66: Ashurst

Mapping reproduced by permission of Ordnance Survey on behalf of HMSO.  
 © Crown copyright and database rights 2017. All rights reserved.  
 Ordnance Survey licence number 100023395  
 Contains OS data © Crown copyright and database rights 2017.

| REVISION | DRAWN | CHECKED | APPROVED | DATE |
|----------|-------|---------|----------|------|
|          |       |         |          |      |



**PROJECT TITLE**  
 Lake Lothing  
**THIRD CROSSING**

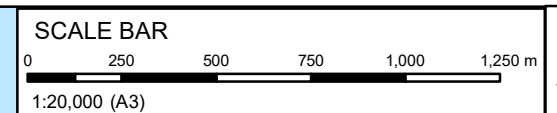
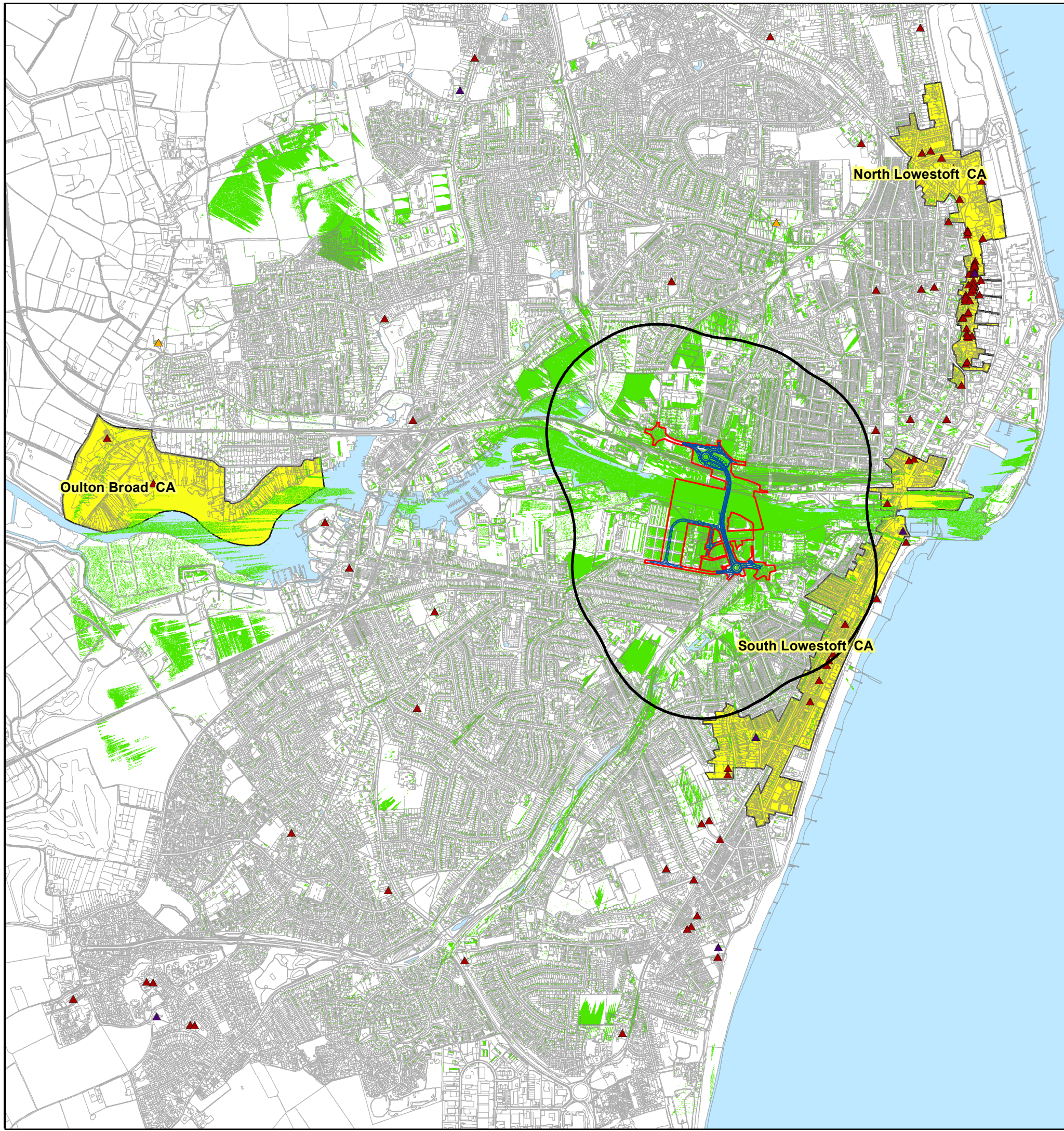
**DRAWING TITLE**  
 Built Heritage Assets  
 Regulation 5(2)(m)  
 Figure 9.1

**DRAWING STATUS**  
 For DCO Submission

| DRAWN | CHECKED | APPROVED | AUTHORISED | SUITABILITY |
|-------|---------|----------|------------|-------------|
| IW    | HR      | HR       | JB         | S4          |

| SCALE @ A3 SIZE | DATE       | REVISION |
|-----------------|------------|----------|
| 1:7,500         | 18/06/2018 | P00      |

| DRAWING NUMBER                |            |        |        |
|-------------------------------|------------|--------|--------|
| Project                       | Originator | Volume |        |
| 1069948-WSP-EHR-LL-SK-LH-0001 |            |        |        |
| Location                      | Type       | Role   | Number |



- KEY**
- The Scheme (illustrative)
  - Order Limits
  - 500m Study Area
  - Conservation Area
  - Zone of Theoretical Visibility – Bridge Raised
- Listed Building**
- Grade
- ▲ I
  - ▲ II
  - ▲ II\*

Mapping reproduced by permission of Ordnance Survey on behalf of HMSO.  
 © Crown copyright and database rights 2017. All rights reserved.  
 Ordnance Survey licence number 100023395  
 Contains OS data © Crown copyright and database rights 2017.

|  |  |  |  |  |
|--|--|--|--|--|
|  |  |  |  |  |
|  |  |  |  |  |
|  |  |  |  |  |
|  |  |  |  |  |
|  |  |  |  |  |

| REVISION    | DRAWN | CHECKED | APPROVED | DATE |
|-------------|-------|---------|----------|------|
| DESCRIPTION |       |         |          |      |



**PROJECT TITLE**  
 Lake Lothing  
**THIRD CROSSING**

**DRAWING TITLE**  
 Designated Heritage Areas  
 Regulation 5(2)(l)  
 Figure 9.2

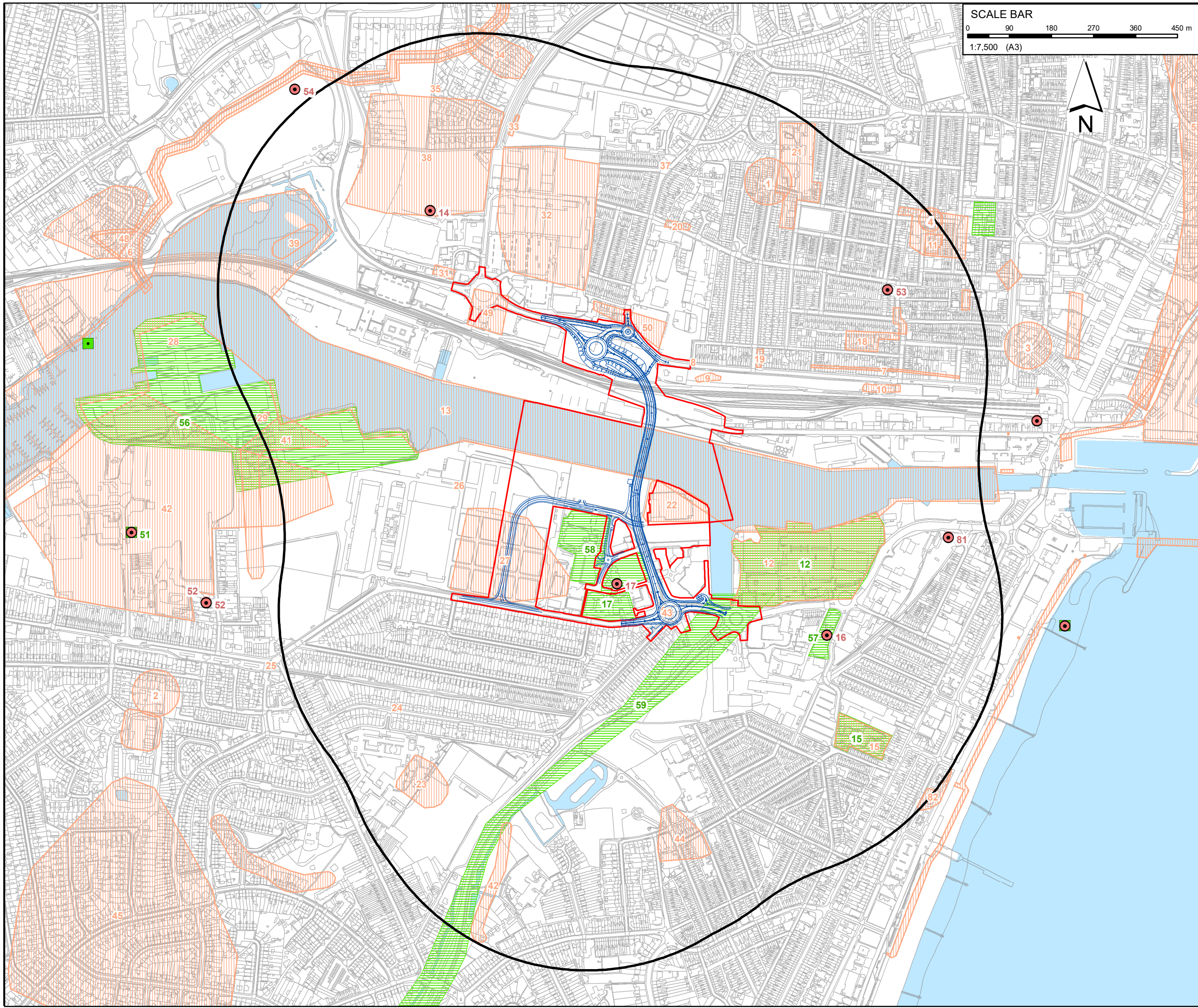
**DRAWING STATUS**  
 For DCO Submission

| DRAWN | CHECKED | APPROVED | AUTHORISED | SUITABILITY |
|-------|---------|----------|------------|-------------|
| IW    | HR      | HR       | JB         | S4          |

| SCALE @ A3 SIZE | DATE       | REVISION |
|-----------------|------------|----------|
| 1:20,000        | 18/06/2018 | P00      |

**DRAWING NUMBER**

|                               |            |        |        |
|-------------------------------|------------|--------|--------|
| Project                       | Originator | Volume |        |
| 1069948-WSP-EHR-LL-SK-LH-0002 |            |        |        |
| Location                      | Type       | Role   | Number |



SCALE BAR  
 0 90 180 270 360 450 m  
 1:7,500 (A3)



- KEY**
- The Scheme (illustrative)
  - Order Limits
  - 500m Study Area
  - Non Statutory Heritage Assets**
  - Heritage Monuments (Point)
  - Heritage Events (Point)
  - Heritage Monument (Region)
  - Heritage Event (Region)

Mapping reproduced by permission of Ordnance Survey on behalf of HMSO.  
 © Crown copyright and database rights 2017. All rights reserved.  
 Ordnance Survey licence number 100023395  
 Contains OS data © Crown copyright and database rights 2017.

|  |  |  |  |  |
|--|--|--|--|--|
|  |  |  |  |  |
|  |  |  |  |  |
|  |  |  |  |  |
|  |  |  |  |  |

| REVISION | DRAWN | CHECKED | APPROVED | DATE |
|----------|-------|---------|----------|------|
|          |       |         |          |      |

**Suffolk County Council**

**PROJECT TITLE**

Lake Lothing  
**THIRD CROSSING**

**DRAWING TITLE**

Non Designated Heritage Areas  
 Regulation 5(2)(l)  
 Figure 9.3

**DRAWING STATUS**

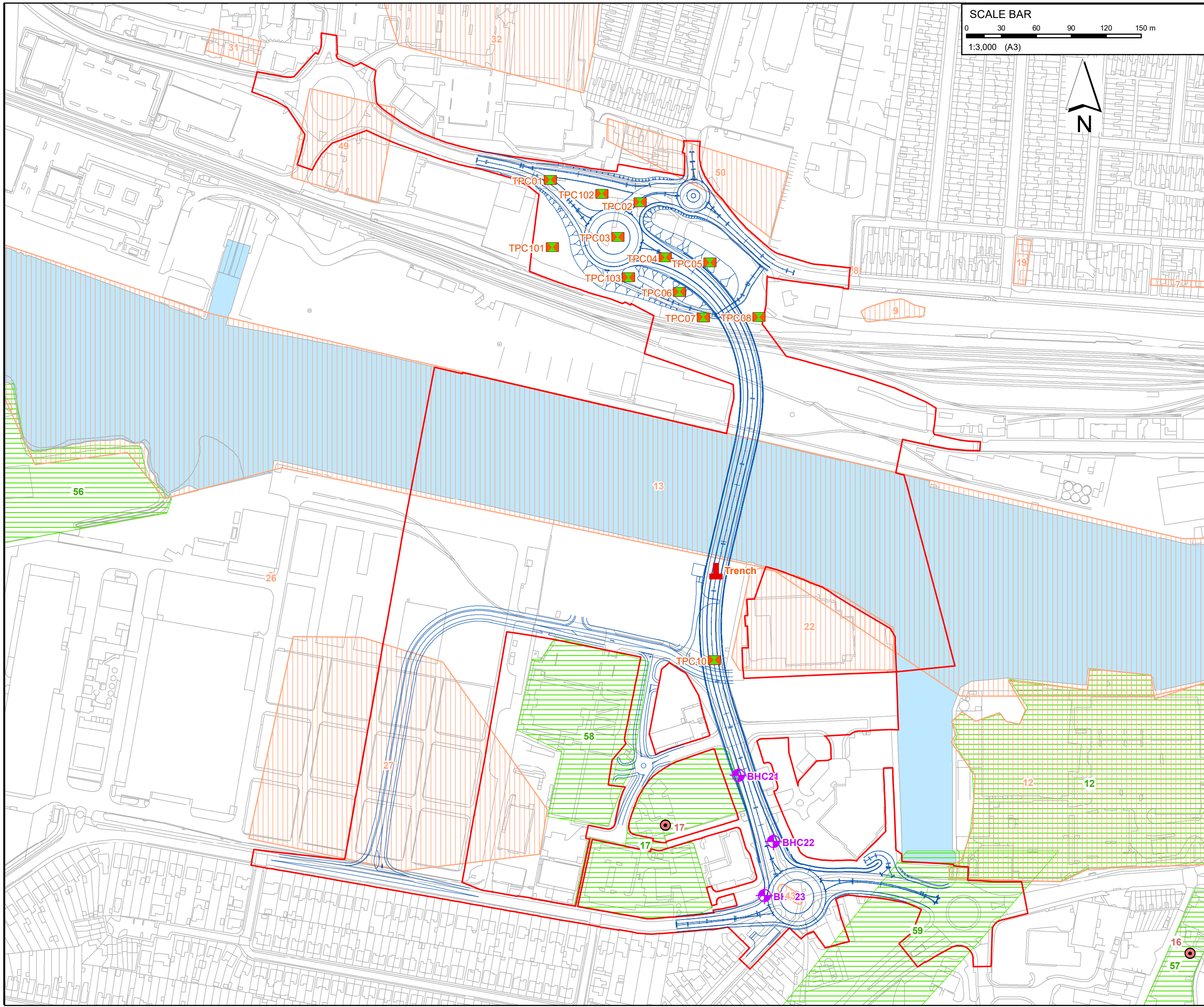
For DCO Submission

| DRAWN | CHECKED | APPROVED | AUTHORISED | SUITABILITY |
|-------|---------|----------|------------|-------------|
| IW    | HR      | HR       | JB         | S4          |

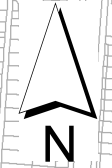
| SCALE @ A3 SIZE | DATE       | REVISION |
|-----------------|------------|----------|
| 1:7,500         | 18/06/2018 | P00      |

**DRAWING NUMBER**

|                               |            |        |        |
|-------------------------------|------------|--------|--------|
| Project                       | Originator | Volume |        |
| 1069948-WSP-EHR-LL-SK-LH-0003 |            |        |        |
| Location                      | Type       | Role   | Number |



SCALE BAR  
0 30 60 90 120 150 m  
1:3,000 (A3)



- KEY**
- The Scheme (illustrative)
  - Order Limits
  - Non Statutory Heritage Assets**
  - Heritage Monuments (Point)
  - Heritage Events (Point)
  - Heritage Monument (Region)
  - Heritage Event (Region)
  - GI Sampling Locations**
  - Onshore Exploratory Hole
  - Trial Pit
  - ┆ Trial Trench

Mapping reproduced by permission of Ordnance Survey on behalf of HMSO.  
© Crown copyright and database rights 2017. All rights reserved.  
Ordnance Survey licence number 100023395  
Contains OS data © Crown copyright and database rights 2017.

|  |  |  |  |  |
|--|--|--|--|--|
|  |  |  |  |  |
|  |  |  |  |  |
|  |  |  |  |  |
|  |  |  |  |  |

| REVISION | DRAWN | CHECKED | APPROVED | DATE |
|----------|-------|---------|----------|------|
|          |       |         |          |      |



**PROJECT TITLE**  
Lake Lothing  
**THIRD CROSSING**

**DRAWING TITLE**  
GI Sampling Locations Subject to  
Archaeological Watching Brief  
Regulation 5(2)(a)  
Figure 9.4

**DRAWING STATUS**  
For DCO Submission

| DRAWN | CHECKED | APPROVED | AUTHORISED | SUITABILITY |
|-------|---------|----------|------------|-------------|
| IW    | HR      | HR       | JB         | S4          |

| SCALE @ A3 SIZE | DATE       | REVISION |
|-----------------|------------|----------|
| 1:3,000         | 18/06/2018 | P00      |

| DRAWING NUMBER                |      | Project | Originator | Volume |
|-------------------------------|------|---------|------------|--------|
| 1069948-WSP-EHR-LL-SK-LH-0004 |      |         |            |        |
| Location                      | Type | Role    | Number     |        |